



# SHALIYAH

**Reconstructionist Synagogue of the North Shore**

March 2015 *A Community Dedicated to Change and Committed to Tradition* Adar/Nisan I 5775



## **Celebrate Rabbi Lee**

**SATURDAY, JUNE 13<sup>th</sup>**

We are pleased to share with all of you that we will honor **RABBI LEE's** 40<sup>th</sup> Anniversary in the Rabbinat. See page 12 for more!



## **MARCH 25, 2015 WOMEN'S SEDER**

Open to all women and girls of bat mitzvah age and above.  
RSVP now – details on page 11

**ISRAEL CULTURE UNIVERSITY  
SUNDAY, MARCH 22<sup>ND</sup>  
DETAILS ON PAGE 9**

### **This Issue**

- 2 JCC News
- 3 Rabbi Lee
- 4 Youth and Synagogue School News
- 5 Gan Shalom News
- 6-8 Adult Education and Upcoming Programs
- 9-10 Todah
- 11- 12 Important events to remember

## **SHABBAT B'YAHAD**

The B'Yahad program is an ongoing Saturday morning family service and education experience. All members are welcome! Adult Text Study begins at 9:00 a.m. and the community Family Service begins at 10:15 a.m. **We will meet on March 21<sup>st</sup> for our next Shabbat.**

## **CELEBRATE PURIM WITH RSNS**

**WEDNESDAY, MARCH 4<sup>th</sup>**

**6:00 p.m. MEGILLAH READING**

**6:30 p.m. PURIM PLAY  
(A Billy Joel Purim)**

**PURIM CARNIVAL  
SUNDAY, MARCH 8<sup>TH</sup>  
11 a.m. – 2 p.m.**

## **SHABBAT UNPLUGGED A SINGING SERVICE MARCH 27<sup>TH</sup> 8:00 P.M.**

Join us for a joyous evening of music and singing with a fantastic band (drums, guitars, strings, sax, etc.) led by our very own Solomon Hoffman!

### **APRIL SHALIYAH ISSUE**

The deadline for the April 2015 issue is March 15<sup>th</sup>.

To submit content for the APRIL Shaliyah,  
email your copy as a word document to [rsnsnewsletter@gmail.com](mailto:rsnsnewsletter@gmail.com)



**Parenting ♦ Caregiving ♦ Marital Concerns  
Separation/Divorce ♦ Bereavement  
Geriatric Care ♦ Cancer Wellness ♦ Career ♦ Legal ♦ Financial**

A caring place to turn to find support and guidance  
during life changes and challenges.

## **SHREDDING FOR A CAUSE**

IT'S FOR A GOOD CAUSE – \$6 per bag or box of personal documents. 100% of  
the proceeds to support the Nancy Marx Strength to Strength Cancer Wellness  
Programs.

**Save the Date!  
Sunday, April 26  
2:00–4:00pm  
Sid Jacobson JCC parking lot**

For more information, contact Susan Berman, Engage Community Organizer,  
516-484-1545, ext. 202, [sberman@sjjcc.org](mailto:sberman@sjjcc.org)

### **PARTNERS IN CARING STAFF**

Randy Hight, LCSW                      Margy Ringelheim, LMSW  
Audrey J. Bernstein, LMSW  
Michelle Laser, Director of Social Services

**Our Warm Line is staffed by your caring, professional social workers.**

**CALL 516.484.1545, ext. 196**

Phone calls are always free and confidential.

## **RABBI LEE**

Dear Friends,

Almost three decades ago, our congregant, Harriet Reichman initiated, a Thursday night Bible Study Group at our synagogue. The group's mandate was to read every word of the Tanak aloud beginning with Genesis and ending with Second Chronicles. Members would meet weekly to read together for the first hour, after which one of the rabbis would be called on to answer questions raised in the reading. "What do we do now?" was the final question raised when the last words were read nine years later. "Let's do it again beginning with 'in the beginning . . .'" was the consensus of the group. And so we did.

More than fifteen years later, we have finished reading the second third of the Hebrew Bible, the section called "Prophets." Still on Thursday nights, the seminar now meets every other week, all of us together for the full session. I have heard from colleagues and from our rabbinic interns that the group is unique. Since traditional Judaism is based on the Talmud and subsequent rabbinic codes, it is rare that traditional Jews and even rabbinical students read through the complete biblical text. But it's not only what we read, it's how we read it that sets our seminar apart. Ours is a critical reading of the text divorced from how it came to be interpreted, understanding that the text is a product of human redaction. We examine the text within the historical context of the writer or writers. In reading the text, we transport ourselves back in time to the period of the composition of the material, freeing ourselves, as best we can, from our twenty-first century considerations in order to understand the ancient Jewish mindset.

As you might imagine this pathway through the Bible has not always been easy. When dealing with a text that that is, at some points, more than 3000 years old, finding clarity and meaning can be challenging. But the stalwart members of the seminar have pushed ahead. And on February 19<sup>th</sup>, we will begin reading the Book of Psalms, the first collection of the last third of the Tanak. It should take us another decade to reach the very end, God willing. And so, I wish my fellow travelers strength as we move forever forward into our People's past.

With respect and admiration, I am, warmly,  
Lee

P.S. New participants are always welcome. No previous experience is required. Attendance is always on a 'whenever' basis.

## YOUTH PROGRAMS

### B'YAHAD

The B'yahad program is an ongoing Saturday morning family service and education experience. All families are encouraged to attend every B'yahad session. This will act as a reinforcement of our prayer program. **We will meet on March 21<sup>st</sup> for our next family Shabbat.**

### PJ LIBRARY

**Save the date for our next event – April 1<sup>st</sup> when we celebrate Pesah.** To learn more about the PJ Library go to the following link [www.pjlibrary.org](http://www.pjlibrary.org)

### Or Hadash - For Grades 4 - 6

This year's program included six "Saturday Nights at the Movies" (at RSNS) plus a trip to the HUC Soup Kitchen. The next Night at the movies is March 28<sup>th</sup>. For more details or to sign up (if you have not prepaid for all the events, please contact the office.

### KADIMA

Kadima class with parents:

March 3<sup>rd</sup>, 6:00-8:00 p.m.

Kadima class with students only:

March 10<sup>th</sup>, 17<sup>th</sup>, 24<sup>th</sup> and 31<sup>st</sup>, 6:00-8:00 p.m.

### ADOPT A SURVIVOR

Meeting Wednesday, March 11<sup>th</sup> 5:30-7:00 p.m. (with dinner) AND Thursday, March 26<sup>th</sup> from 6:30- 7:30 – the final rehearsal! (Note the new time)

### TEENS

#### Boy's Group – Bros' Hodesh

Our next meeting will be on Tuesday night, **March 10<sup>th</sup>, from 6:30-8:30 p.m.** Send in your forms today, and join our Facebook group!

<http://www.facebook.com/groups/187609124592536/>

**Girl's Rosh Hodesh** - 8<sup>th</sup>-12<sup>th</sup> grade girls join this special "girls only" group. There is fabulous food and company, while we explore current topics important to girls today. **Our next meeting will be on March 31<sup>st</sup> from 6:30 – 8:00 p.m.**

#### Kesher Hadash -

Stay tuned for our next Kesher Hadash event! Watch your e-mails for all the details.

## SYNAGOGUE SCHOOL NEWS

**NO SYNAGOGUE SCHOOL ON TUESDAY, MARCH 3<sup>RD</sup> !**

**INSTEAD, JOIN US ON WEDNESDAY, MARCH 4<sup>TH</sup> AS WE CELEBRATE PURIM!**

**Purim Megillah Reading 6:00 p.m., Play 6:30 p.m.**

### Important Calendar Change:

**School WILL meet on Thursday, March 5. NO classes Thursday, April 2.**

### SPECIAL PROGRAMS HELD DURING REGULAR CLASS TIME – ALL DATES ARE TUESDAYS

March 31<sup>st</sup> Pesah Day

May 19<sup>th</sup> Zimriah

April 14<sup>th</sup> Yom HaShoah

**Shabbat Services:** Family services are held one Friday of each month at 7:30 p.m. There are many different ways for families to participate. We work with each class to enable parents to provide Jewish role models for their children as well as expand their knowledge of Jewish liturgy and texts. You may sign up to help with a Family Service oneg. The *B'yahad* Saturday morning family service and education program will act as reinforcement for our *tefilla* program.

### FRIDAY EVENING FAMILY SERVICE PARTICIPATION 7:30 p.m.

March 6<sup>th</sup> Gimmel

April 24<sup>th</sup> Kindergarten/Alef

May 15<sup>th</sup> Shabbat School



Purim is almost here and the nursery school children are busy getting ready for this holiday by learning about Queen Esther, King Ahasuerus, Mordecai and Haman. We'll be making crowns, groggers, puppets, hamantaschen and costumes. Our culminating activity will be a PURIM PARADE AND PARTY on March 5<sup>th</sup>.

**School photos will take place on March 9<sup>th</sup>** This is a fundraiser for our school but, as always, there is no obligation to purchase anything at all.

**Parent-Teacher conferences for our three and four year olds will take place on Wednesday March 11<sup>th</sup>.**

**Sunday March 15<sup>th</sup>** is Special Guest Day at Gan Shalom! Our classrooms will be filled with family members and children working, playing and sharing snack with each other.

**SAVE THE DATE– We are looking forward to our annual Parent's Night Out on Saturday April 25<sup>th</sup>. We look forward to our annual auction, and good company that's sure to be lots of fun!**

*Laura*

### **Registration continues for the fall and our fun filled seven week summer program.**

For 7 weeks this summer, your child can have a wonderful experience at Gan Shalom. Our summer program begins June 29<sup>th</sup> and ends August 14<sup>th</sup>. This summer we will offer a four day or 5 day a week program. The three year olds will meet from 9:30 a.m. to 12:30 p.m. and the four year olds will meet from 9:30 a.m. to 1:30p.m. The fours will bring a dairy lunch from home daily. A daily ½ hour lunch extension is available for 3 year olds. Children will have the opportunity to play indoors in an air-conditioned classroom, and outdoors where **sprinklers** and a **water slide** will be available. Special activities are planned for each week of the program. Stop by the nursery school office for an application.

Summer fees are as follows:

#### **Three year old program:**

4 days a week:	Synagogue Members: \$1450	Non-Members: \$1550
5 days a week	Synagogue Members: \$1800	Non-Members: \$1900
Lunch extensions	4 days a week - \$200	5 days a week - \$250

#### **Four year old program:**

4 days a week:	Synagogue Members: \$1800	Non-Members: \$1950
5 days a week	Synagogue Members: \$2200	Non-Members: \$ 2400

#### **Toddler Programming**

We are delighted to offer two types of programming for our toddlers this summer. Our Summer Program begins on Monday June 29 and ends on Friday August 14, 2015.

Our seven week Come Play With Me is a non separating class for children who will be two by December 1, 2015 and their parent or caregiver. We will be offering this class on Wednesdays from 9:30 - 11:00AM. Tuition will be \$225 for synagogue members and \$250 for non-members.

Our seven week Summer Twos class is a separating class for children who will be two by December 1, 2015. This class meets on Tuesdays and Thursdays from 9:30-11:30AM. Tuition is \$600 for synagogue members and \$650 for non-members.

Come play, paint, paste, sing and share snack with us this summer!! No bottles or pacifiers for these classes, please. All classes will meet in a air conditioned room and include water play in the playground.

## ADULT STUDIES & SEMINARS

### ***EAT, READ, TALK***

Rabbi Lee will hold the next of his Thursday afternoon programs in the series at **12:30 p.m. on March 12<sup>th</sup>**. He will again, present an article “ripped from the headlines” of Jewish relevance. Feel free to bring a dairy lunch and we’ll supply the hot drinks and the article to be discussed.

Rabbi Jodie Siff will hold the next of her Thursday afternoon programs on **Thursday, March 26<sup>th</sup> from 12:30-2:00 p.m.** The focus will be the study of Mishnah, the next sacred text written after the Hebrew Bible. You need no previous knowledge to attend her “lunch and learn.” Feel free to bring a dairy lunch and we’ll supply the hot drinks and the article to be discussed.

Call the office (516-627-6274) if you plan to attend either or both of these sessions.

### **BIBLE STUDY**

This group has been and continues to be committed to reading every word of the Hebrew Bible (in English translation). After more than a decade and a half, the group has reached the so-called Minor Prophets, minor not in importance, but in the amount of material that has survived of theirs. We will pick up the reading with the Book of Habbakuk and will move on to Psalms in the course of the year. This seminar meets biweekly on Thursday nights, 8-9:30 p.m. **This month’s meetings are March 5<sup>th</sup> and 19<sup>th</sup>.**

### **SHABBAT SEMINAR**

**The History of Israel: A Documentary Approach:** We began our examination of Zionism six years ago through the lens of the writings of Zionist and anti-Zionist ideologues. Last year we arrived at the founding of the modern State and reached beyond to the Six Day War. We will continue to critically review the development of the State through original political and sociological documents. This seminar meets biweekly on Shabbat afternoons from noon to 1:30 p.m. **This month’s meeting is March 14<sup>th</sup>**

### **WOMEN’S ROSH HODESH GROUP**

Traditional religious ritual was designed, and continues, to meet a variety of needs that relate to life passages: The need for the individual to be acknowledged by community, the need for the community/tribe to read itself into the passages of each member, the need for bonding, which serves both individual and community, the need to (re-)enact dramatically the great stories and messages of the tradition, for the sake of individuals and of the tradition. Through rituals, we create structures that provide an element of predictability and, therefore, safety, around times of insecurity, transition, and/or loss. All women of our congregation are welcome to join us as we continue to study, and learn from each other. **Our next study meeting is not until May. However, please join us on March 25<sup>th</sup> for our Women’s Seder. Details are on page 11.**

### **YIDDISH READING CIRCLE**

We meet on average, every other week on a Friday at 10:00 a.m. in the RSNS Library. For more information and a schedule contact Jerry Bloom at 516-466-2519.

### **CANTOR’S DINNER**

**Friday, March 13<sup>th</sup> 6:30 – 8:00 p.m.**

Join Cantor Eric for a wonderful discussion and dinner as we explore the topic of the year *“Jewish views of the afterlife.”* \$18 for dinner, or come for FREE just for the discussion at 7:00 p.m. Please RSVP to Cantor Eric ([rsnscantor@gmail.com](mailto:rsnscantor@gmail.com)) (whether you’re coming to the dinner OR just the discussion!) by **Monday, March 9<sup>th</sup>**. AND WHY NOT BRING A FRIEND

## **ADULT EDUCATION AND PROGRAMMING Continued . . .**

### **ADULT B'NAI MITZVAH CLASS**

Our adult b'nai mitzvah class will be presenting their D'vrai Torah in small groups according to the schedule listed below. The congregation is invited to attend these services.

**March 14, 2015, 2:00 p.m.**

Debbie Kesselman, Tina Pomeranz,  
Carol Blumenthal

Our formal studies will culminate in a communal b'nai mitzvah to be held on Saturday, June 20, 2015, 9:45 a.m. All are invited!

### **ENGAGING WITH AGING EVENTS**

#### **ENGAGING WITH AGING**

MARCH 5<sup>TH</sup> 11:30 a.m. – 12:30 p.m.

#### **STAYING SAFE IN SNOW AND ICE**

MARCH 5<sup>TH</sup> 12:30 – 1:30 p.m.

Presented by Chari Biton, Senior Mobility  
Manager of Project Independence.

#### **WRITING WORKSHOPS ON AGING**

MARCH 10<sup>TH</sup> and 24<sup>TH</sup> - 12:00 noon

**SAVE THE DATE – APRIL 26, 2015  
FOR A SPECIAL WALKING TOUR OF  
CENTRAL PARK.** Details will follow in  
future issues of the Shaliyah.

### **CONGREGATION WIDE PROGRAMS**

**SHABBAT DINNER:** All are welcome.

FRIDAYS AT 6:30 p.m.

Dinner is dairy Italian -- gluten-free option only if requested in advance. Adults \$10, children free. Please RSVP to the office (516-627-6274) by Wednesday of this week to ensure that we order enough food. Next date is April 17<sup>th</sup>

#### **SANDWICH MAKING**

SUNDAYS AT 10:00 a.m.

March 1<sup>st</sup> and April 19<sup>th</sup>

### **MENS GROUP**

The Men's Group meets the second Wednesday of each month to discuss topics of interest selected by members. While the discussion starts off with a selected topic the meetings move in many directions and are a wonderful way for members to get to know one another. All men in the congregation are invited to attend. The next meeting is on **Wednesday, March 11<sup>th</sup> at 7:30 p.m.** Coffee and some snacks will be available.

The topic for discussion will be: *As you reflect on the friends you grew up with, discuss how some met or exceeded their potential while others did not. To what do you attribute the one or the other?*

### **M'YAD L'YAD**

M'Yad L'Yad meaning "from hand to hand" provides support to those in need in our local communities in an anonymous and dignified manner. Needy recipients are matched with volunteer sponsors who provide material and social support. Sponsors are asked to provide four packages a year for "their" family. Packages may include new or used items as well as gift cards. Included in the package there usually is a note written by the sponsor to the recipient using only first names. Frequently the recipient replies, through MYLY, and is so grateful not only for the gifts but to know that someone who doesn't even know them cares. Last year Cantor Eric's 7th graders sponsored a family and will continue to do so this year. If you are interested in sponsoring a family or learning more about M'Yad L'Yad you can call [516-482-0704](tel:516-482-0704) to speak to Roseann Michelson or go to: [hands@myadlyad.org](mailto:hands@myadlyad.org). To call the organization directly, please call [631-486-6636](tel:631-486-6636).



## ADULT EDUCATION AND PROGRAMMING Continued ...

### Israeli Culture University



**Sunday, March 22,  
10:00 a.m. to 2:00 p.m.**

*including childcare\* and  
free Israeli-themed lunch!*

Adults will rotate between the  
following sessions from 10am-12pm

Rabbi Jodie: IRAC (Israel Religious Action  
Center) and the Fight for Social Justice

Rabbi Lee: The Binding of Isaac as Seen  
Through Modern Israeli Poets

Cantor Eric: I Want My ITV: Israeli Society  
Through the Lens of Popular Israeli  
Television

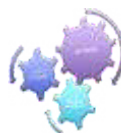
*\*All children will enjoy fun Israeli games  
with Morah Lauren, during all workshops!*

Following lunch, everyone is invited to stay  
for professionally-led Israeli folk dancing!

### Rabbinic Mentorship Program

The Reconstructionist Rabbinical College (RRC), and the Jewish Reconstructionist Federation (JRF) and the Reconstructionist Rabbinical Association (RRA) have collaborated to create a program of rabbinical studentAmentorships@ at JRF-affiliated congregations. Our rabbinic intern, **Georgette Kennebrae**, will visit our congregation five times within the program year for a mentoring experience. Our congregation will have the opportunity to gain close contact with future Reconstructionist rabbinic leaders and benefit from the fresh learning and emerging talent of an RRC student. The rabbinical student will gain practical experience in the day-to-day life of the congregational rabbinate and increase their familiarity with Reconstructionist practice in a flourishing Reconstructionist community.

We would love to have members of the congregation host Georgette for a meal in their home. **Her next visit will be from March 3<sup>rd</sup> – 5<sup>th</sup>. Please contact the office if you can help welcome her into our community.**



### ART SHOWS AT RSNS

So many RSNS members are involved with the arts. It's time to continue our ongoing art shows in the Social Hall. When the art works are for sale, 25% of the sale is a tax deductible contribution to the synagogue.

We schedule a few months in advance of a show and can accommodate paintings, photographs and another media that can be mounted on walls. Artists can be members, family and friends of members and/or those whose works contain Jewish themes. No nudes as we want all ages to be comfortable.

To chat about a show call or email  
Dave Eckert at 516-456-1507 or email  
[davepage@optonline.net](mailto:davepage@optonline.net)  
or Emily Klass at 516-484-9154 or email  
[wepkaplan@gmail.com](mailto:wepkaplan@gmail.com)



## ***Todah . . .***

### **RSNS' Way of Saying Thanks**

In honor of Jane Buford, Ellen Greenfield, Diane Sharrett-Globus, Tom Hicks, Marian Schwartz, & Marty Budow becoming Bnai Mitzvah  
Sheri and Michael Lindner

In honor of Marian Schwartz becoming a Bat Mitzvah  
Renee Lane  
Alice Nathan

In honor of Martha Budow becoming a Bat Mitzvah  
Libby Baskin  
Helen Honig  
Aileen and Philip Monheit

In honor of Tom Hicks becoming a Bar Mitzvah  
The Basulto family  
Eileen Rosendahl and Richard Zweig

In honor of Ariel Birdoff and Adam Rothstein becoming engaged  
Sheri and Michael Linder  
Barbara and Marvin Schaffer

To Leslie and Larry Popkin, on the birth of their grandson, Gavin  
Barbara and Marvin Schaffer

In honor of all of the simcha's in our congregation  
Barbara and Marvin Schaffer

In appreciation of Rabbi Lee and Rabbi Jodie's support  
Roseann and Allen Michaelson

In honor of the arrival of Judith and John Miodownik's newest grandson  
Sheri and Michael Linder  
Barbara and Marvin Schaffer

In appreciation of our list serve  
Andrew and Carole Kassir

In memory of Mark Sisane, brother-in-law of Carrie & Sandy Siff, uncle of Jodie Siff  
Tammy Smiley and family  
Linda and Alan Schwartz  
Susan & Stephen Scherr  
Diane Sharrett-Globus & Gary Globus  
Marty & Jack Budow  
Pearl & Seymour Weinstein  
Alice & Milt Leist  
Arlene Silberzweig  
Joan Haberman  
June & Alvin Pitkow

In memory of Patricia Basulto mother of Vincent Basulto  
Gail Broder Katz

In memory of Eva Miodownik Oppenheim  
Sheri and Michael Linder  
Barbara and Marvin Schaffer

In memory of Milt Alschuler's mother  
Sheri and Michael Linder  
Barbara and Marvin Schaffer

In memory of Viviane Kovac's mother  
Barbara and Marvin Schaffer

In memory of Netta Rosenblatt Avedon, sister of Daryl Rosenblatt  
Leona and Steven Handelman

### **DONATE OR MAKE A PAYMENT ON OUR WEBSITE**

There is an easy and convenient way for you to give a donation to RSNS or to pay your dues. Visit our website at [RSNS.org](https://rsns.org) and use the "DONATE" link near the top of the right side of the home page. All credit cards are accepted.

Complete all information and then click review your donation. On the next page click "Special Instructions to Seller" to indicate the purpose of your donation or payment. Call the office if you have any questions, 516-627-7274

## YARTZEIT

In observance of the yarzeit of her father,  
Sigfried Horowitz  
Karen Starr

In observance of the yarzeit of her mother,  
Shirley Matsil  
Joelle and Geoff Serota

In observance of the yarzeit of Leo Haberman  
Joan Haberman

In observance of the yarzeit of their parents  
Selma and Walter Rosenberg and  
Esther and Morris Budow  
Jack & Marty Budow

In observance of the yarzeit of Arnold Sander  
Ilse Sander

In observance of the yarzeit of her mother,  
Roslyn Rosenberg  
Diane Sharrett-Globus

## MAZAL TOV

Cindy Schechter on the marriage of  
Robyn to Matthew Sendach

## CONDOLENCES

Pauline Blum on the death of her beloved  
husband George.

Carrie and Sandy Siff on the death of their  
brother-in-law Mark Sisane

Carol Stern on the death of her  
father Richard Hill

## USING GOODSEARCH FOR YOUR ONLINE SERCHES HELPS RSNS

Every time an RSNS member uses a GoodSearch service, money is donated to the synagogue. If you haven't yet participated, you can view our dedicated profile below:  
<http://www.goodsearch.com/nonprofit/rsns-reconstructionist-synagogue-of-the-north-shore.aspx>

GoodSearch Services:

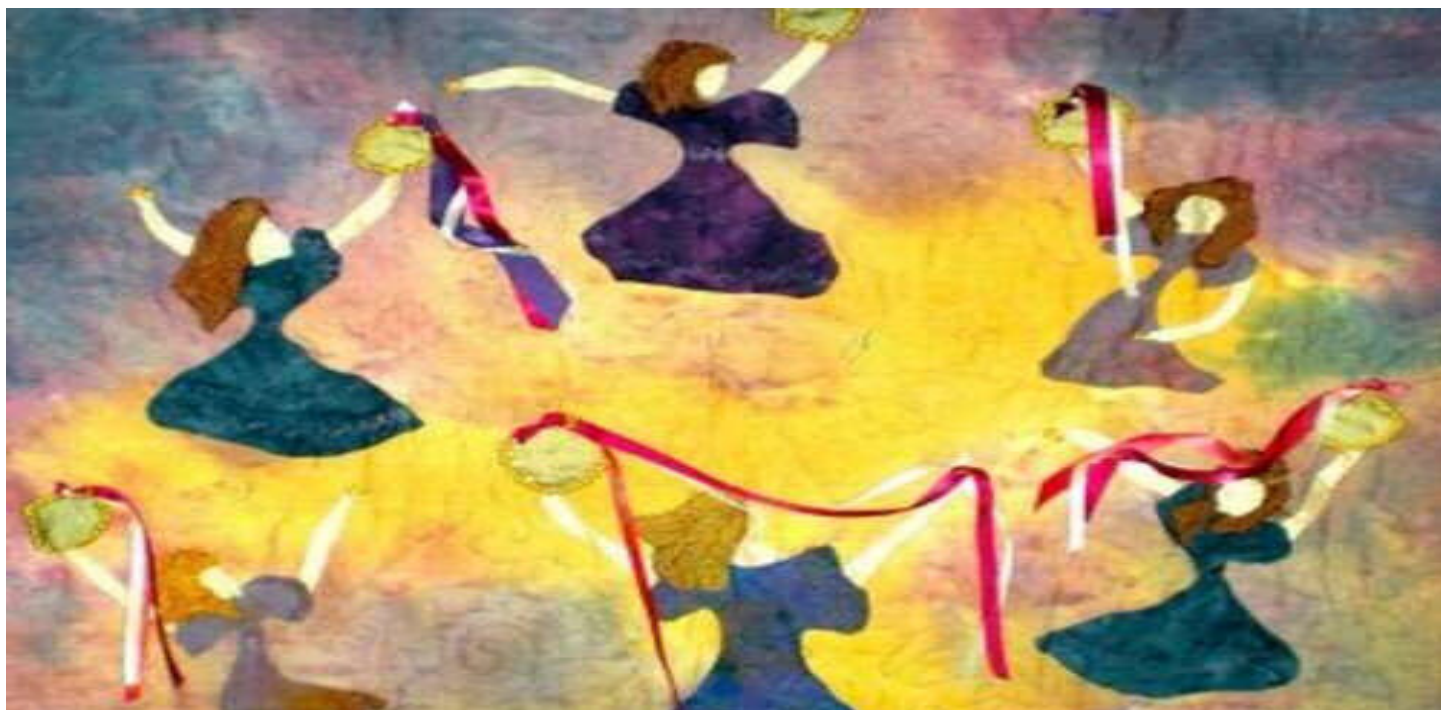
[GoodSearch.com](http://www.GoodSearch.com) - The search engine with a unique social mission. It's powered by Yahoo!, so you get great search results, and each time you search, GoodSearch donates about a penny to your cause!

[GoodShop.com](http://www.GoodShop.com)- The online marketplace that donates a percentage of each purchase to your organization. You can choose from more than 2,500 popular merchants, find more than 100,000 coupons and deals, and the experience of shopping through GoodShop is exactly the same as going to the retailer's websites directly.

[GoodDining.com](http://www.GoodDining.com) - The first 365 day a year Dine for Charity program. Dine in or take out at over 10,000 participating restaurants nationwide. Up to 6% of your total check including tax and tip will be donated to RSNS.

*We have been advised that it is important to have and use up-to-date anti-virus software before using GoodSearch.*

**Consider making a donation  
in honor or in memory of someone,  
or to celebrate a simcha!**



## A Women's Pesah Celebration: A taste of Baghdad and India

A warm, dynamic evening filled with music, fabulous food, wine, friends, old and new, thoughtful discussion, and just fun!

Wednesday, March 25<sup>th</sup>

6:30 p.m. – 9:00 p.m.

Cost: \$40 (women), \$18 (pre-bat mitzvah girls, age 8 and above)

***Non-member Guests Welcome***

Questions? Contact  
June Pitkow – [jpit100@aol.com](mailto:jpit100@aol.com) - (516) 579-2880 x309

*Another exciting program brought to you by the Program Committee*

---

### **Women's Seder**

Please send this tear-off, with your check made out to RSNS, to the Synagogue.

Name(s): \_\_\_\_\_

No. attending: \_\_\_\_\_ Women x \$40 + \_\_\_\_\_ pre-bat mitzvah age girls x \$18 \_\_\_\_\_

Phone: \_\_\_\_\_

Email: \_\_\_\_\_

**~ SAVE THE DATE ~**  
**Celebrate Rabbi Lee's 40<sup>th</sup> Anniversary**  
**in the Rabbinate**  
**Saturday, June 13, 2015**  
**7:30 p.m. at RSNS**  
**Cocktails, Dinner, Music, Havdalah & Community**

**Share your memories in a keepsake book for Rabbi Lee.**

We will create a 12" by 12" book using Shutterfly® that will be a keepsake for Lee!

Send us your pictures, stories, poems, jokes, moments, quotable quotes, shared experiences, favorite shared meals, etc. Be funny, sentimental or serious.

(We'll make 2 copies - 1 for Lee to keep in his personal library and 1 for all of us to enjoy at RSNS.)

**This is the fundraiser for the event.**  
**Please participate and send us your**  
**PICTURE(S) or TEXT or TEXT & PICTURE**

- Don't worry about the exact size – our 'Rabbi Lee Memory Book Team' will make it work
- This is **not a journal** so dimensions are more flexible
- You can send your text and pictures as separate attachments
- You can organize a group of people to submit together and fill up a page or part of a page. The options are endless!
- JPEG format (.jpg) preferred for photos
- Submit before **April 15** so we can present this to Rabbi Lee at the event

PRICING:

FULL PAGE	\$400
1/2 PAGE	\$250
1/3 PAGE	\$175
1/4 PAGE	\$125

**PLEASE SUBMIT YOUR MEMORIES BY APRIL 15<sup>TH</sup>**

- ✓ **e-mail your pictures and text to: [HonoringRabbiLee@yahoo.com](mailto:HonoringRabbiLee@yahoo.com)**
  - ✓ **send checks and hard copy to: RSNS**
  - ✓ **please contact the office if you want to pay by credit card**

# THE RSNS PURIM CARNIVAL

**Sunday, March 8, 2015**

**11a.m. - 2p.m.**



**Giant Inflatable Slide**

**Fun House Bouncer**

**Clown - Prizes**

**Spin Art - Candy Art**

**Fun Carnival Games for All Ages**

*All games and amusements professionally run.*

**One Low Price: Kids \$15**

*Price does not include food*

**Parents and Grandparents FREE**

*Hot Dogs - Soda - Juice - Popcorn - Knishes - Hamentaschen - Cotton Candy*

**Wednesday, March 4**

**Megillah Reading - 6:00 p.m.**

*Bring a box of pasta to use as a grogger.*

*After the service they will be collected and donated to the INN.*

**Purim Play - "A Billy Joel Purim"**

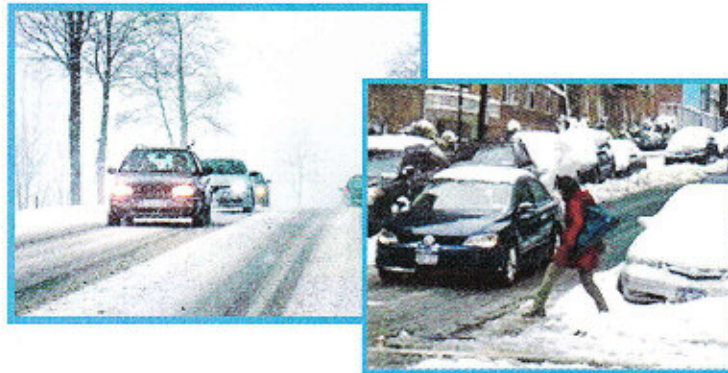
**6:30 p.m.**





TOWN OF NORTH HEMPSTEAD SUPERVISOR  
JUDI BOSWORTH, THE TOWN BOARD, AND THE DEPT.  
OF SERVICES FOR THE AGING ARE PROUD TO PRESENT

## Staying Safe in Ice and Snow



**Learn how to prepare for inclement weather, and  
how to navigate on ice and snow—whether  
walking or driving**

**An overview of Project Independence Mobility  
services will be presented as well**

**Presented By:** Chari Biton, Senior Mobility Manager

**Date:** Thursday, March 5, 2015

**Time:** 12:30pm – 1:30pm

**Location:** Reconstructionist Synagogue of the North Shore  
1001 Plandome Road  
Plandome, NY 11030

Project Independence transportation programs are funded in part by a grant from the New York Metropolitan Transportation Council (NYMTC) New Freedom funds via the New York State Department of Transportation and the Federal Transit Administration.

CALL 311 OR (516) 869-6311  
NORTHHEMPSTEADNY.GOV

Town of North Hempstead  
**Project  
Independence**



# Save the Date Community Israel Festival

Yom HaAtzmaut Celebration

Sunday, April 26, 11:00am-3:00pm

at Bernice Jacobson Day School & Camp

All ages

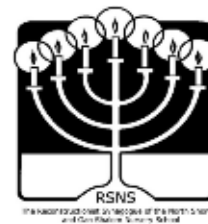
Free for the community.

Food vendors, carnival and rides, Israeli treats  
and much more. Valet parking available.

For more information, contact Nadav Eylon, Director of the  
Center for Israel, 516-484-1545, ext. 115, neylon@sjcc.org

**CAMP  
JACOBSON**

SID JACOBSON  
**jcc**  
BERNICE JACOBSON  
DAY SCHOOL & CAMP



Shelter Rock Jewish Center



[sjcc.org](http://sjcc.org)

a beneficiary of  
**UJA Federation**  
of New York  
*Good together.®*



# **MAXONS<sup>®</sup>**

**R E S T O R A T I O N S**

**DISASTER RECOVERY EXPERTS**

**Damon Gersh, CR**  
President/CEO

tel: 212.447.6767

fax: 212.447.6251

[dgersh@maxons.com](mailto:dgersh@maxons.com)

[www.maxons.com](http://www.maxons.com)

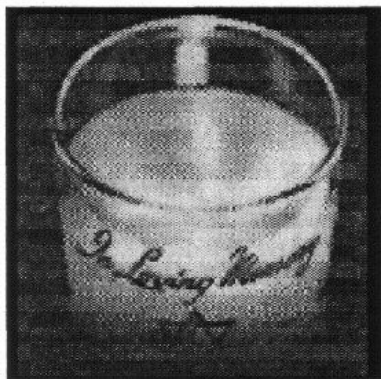
280 Madison Avenue  
New York, NY 10016

# RIVERSIDE- Nassau North Chapels

55 North Station Plaza  
Great Neck, New York 11021  
(516) 487-9600

**PRE-NEED COUNSELING AVAILABLE**

DAVID M. RUBIN



For Generations  
A Symbol Of Jewish Tradition

Continuing to maintain the high service standards of the Rosenthal, Grossberg and Alpert families.

Riverside Memorial Chapel is a participating member firm of The PRE Plan,<sup>™</sup>  
an FDIC insured fund for pre-paid funeral arrangements.





# Guttermann's

FUNERAL DIRECTORS SINCE 1892 INC

***The Largest Family Owned & Operated Jewish Funeral Homes  
Serving Long Island, New York & Florida***

***Directors:*** \*STEWART GUTTERMAN • PHILIP GUTTERMAN  
STEVEN KANOWITZ • \*HOWARD C. KOTKIN  
\*ROBERT SHERMAN • \*ELLIOTT H. WOLFE

***Chapels In:*** ROCKVILLE CENTRE, L.I.: 175 N. Long Beach Rd. • 516-764-9400  
WOODBURY, L.I.: 8000 Jericho Turnpike • 516-921-5757  
QUEENS: 98-60 Queens Blvd. and 66th Ave. • 718-896-5252  
BROOKLYN: 2576 Flatbush Ave. at Ave. U • 718-284-1500

***In Florida:*** GUTTERMAN-WARHEIT MEMORIAL CHAPEL • 1-800-992-9262  
SERVING MIAMI-DADE, BROWARD, PALM BEACH & MARTIN COUNTIES

***Arrangements for Out-of-State Burials***

*\* Of Blessed Memory*

---

***MONUMENTS BY GUTTERMAN'S***  
***www.guttermansinc.com***



## Castle Repair

**David Weiss**  
President

Tel 516.367.7007  
Fax 516.883.1449  
7A Irma Avenue  
Port Washington, New York 11050  
david@castlerepair.com  
castlerepair.com

503 Middle Neck Rd.  
Great Neck, NY 11023

Steven Menist  
Owner



Great Neck's Original Bagel Bakery  
Since 1969

# BAGEL HUT



*Specializing in Gourmet Appetizing  
& Catering*

www.bagelhut.net



516.482.8939  
Fax: 516.487.8030

(516) 747-6363

CONTACT LENSES  
EYE EXAMINATIONS  
QUALITY EYEWEAR

S.H.  
Laufer

## VISION WORLD

BRUCE FARBER  
Optician

888 Willis Ave.  
Albertson, NY 11507

Carlos

David

## D&C AUTO BODY



*Repair & Body Work*

40 Windsor Ave.  
Mineola, NY 11501

Tel: 516 - 248-3039  
Fax: 516 - 248-9023



SHARI SCHARLAT

PHONE: 516.647.8700  
FAX: 516.944.4460  
EMAIL: shari@eventplanningpartners.com  
WWW: eventplanningpartners.com